

DEPARTMENT OF THE ARMY TECHNICAL MANUAL

**ORGANIZATIONAL MAINTENANCE REPAIR PARTS
AND SPECIAL TOOLS LISTS
TELEPHONE TERMINAL AN/TCC-23 (FSN 5805-537-7410)
AND
TELEPHONE TERMINAL AN/TCC-3 (FSN 5805-503-2648)**

**Headquarters, Department of the Army, Washington, D.C.
29 November 1974**

Current as of 24 September 1974

	Paragraph	Page
SECTION I INTRODUCTION		
Scope	1-1	2
General	1-2	2
Explanation of columns	1-3	2
Special information	1-4	4
Location of repair parts	1-5	4
Abbreviations (Not applicable)	1-6	4
Reporting of equipment publication improvements	1-7	4
II. PRESCRIBED LOAD ALLOWANCE (Not applicable)		
III. REPAIR PARTS LIST		6
IV. SPECIAL TOOLS, TEST AND SUPPORT EQUIPMENT (Not applicable)		
V. INDEX - FEDERAL STOCK NUMBER AND REFERENCE NUMBER CROSS- REFERENCE TO FIGURE AND ITEM NUMBER		11

*This manual supersedes TM 11-5805-223-30P, 16 October 1963.

SECTION I INTRODUCTION

1-1. Scope

This manual lists repair parts and special tools required for the performance of organizational maintenance of the AN/TCC-23 and AN/TCC-3. The PCCN for the AN/TCC-23 is GCWAAN and GCWAAO for the AN/TCC-3.

1-2. General

This repair parts and special tools list is divided into the following sections:

- a. Prescribed Load Allowance (PLA) -Section II. Not applicable.
- b. Repair Parts List -Section III. A list of repair parts authorized for the performance of maintenance at the organizational level. This repair parts list is arranged in alphabetical order.
- c. Special Tools, Test and Support Equipment-Section IV. Not applicable.
- d. Index -Federal Stock Number and Reference Number Cross-Reference to Figure and Item Number - Section V. A list in ascending numerical sequence, of all Federal stock numbers appearing in the listings, followed by a list, in alphabetic sequence, of all reference numbers appearing in the listings. Federal stock number and reference numbers are cross-referenced to each illustration figure and item number or reference designation appearance.

1-3. Explanation of Columns

The following provides an explanation of columns in the repair lists -

- a. Source, Maintenance, and *Recoverability Codes* (SMR).

(1) **Source code.** Indicates the manner of acquiring support items for maintenance, repair, or overhaul of end items. **Source codes are —**

<i>Code</i>	<i>Explanation</i>
PA —	Item procured and stocked for anticipated or known usage.
PB —	Item procured and stocked for insurance purposes because essentiality dictates that a minimum quantity be available in the supply systems.
PC —	Item procured and stocked and which otherwise would be coded PA except that it is deteriorative in nature.
PD —	Support item, excluding support equipment, procured for initial issue or outfitting and stocked only for subsequent or additional
PE —	Support equipment procured and stocked for initial issue or outfitting to specified maintenance repair activities.
PF —	Support equipment which will not be stocked but which will be centrally procured on demand.
PG —	Item procured and stocked to provide for sustained support for the life of the equipment. It is applied to an item peculiar to the equipment which because of probable discontinuance or shutdown of production facilities would prove uneconomical to reproduce at a later time.
KD —	An item of depot overhaul/repair kit and not purchased separately. Depot kit defined as a kit that provides items required at the time of overhaul or repair.
KF —	An item of a maintenance kit and not purchased separately. Maintenance kit defined as a kit that provides an item that can be replaced at organizational or direct support or general support levels of maintenance.
KB —	Item included in both a depot overhaul/repair kit and a maintenance kit.
MO —	Item to be manufactured or fabricated at organizational level.
MF —	Item to be manufactured or fabricated at direct support maintenance level.
MH —	Item to be manufactured or fabricated at general support maintenance level.
MD —	Item to be manufactured or fabricated at depot maintenance level.
AO —	Item to be assembled at organizational level.
AF —	Item to be assembled at direct support maintenance level.
AH —	Item to be assembled at general support maintenance level.
AD —	Item to be assembled at depot maintenance level.
XA —	Item is not procured or stocked because the requirements for the item will result in the replacement of the next higher assembly.
XB —	Item is not procured or stocked. If not available through salvage, requisition.
XC —	Installation drawing, diagram instruction sheet, field service drawing, that is identified by manufacturers' part number.

Code	Explanation
XD	Support items can be requisitioned with justification.

NOTE

Cannibalization or salvage may be used as a source of supply for any items source coded above except those coded XA and aircraft support items as restricted by AR 700-42.

(2) Maintenance code. Maintenance codes are assigned to indicate the levels of maintenance authorized to USE and REPAIR support items. The maintenance codes are entered in the third and fourth positions of the Uniform SMR Cede Format as follows -

(a) Use (third position.). The maintenance code entered in the third position indicates the lowest maintenance level authorized to remove, replace, and use the support item. The maintenance code entered in the third position indicates one of the following levels of maintenance.

Code	Application/Explanation
O	Support item is removed, replaced, used at the organizational level of maintenance.

NOTE

A code "C" may be used in this position to denote crew or operator maintenance performed within organizational maintenance.

F	Support item is removed, replaced, used at the direct support maintenance level.
H	Support item is removed, replaced, used at the general support maintenance.
D	Support items that are removed, replaced, used at depot only.

(b) Repair (fourth position). The maintenance code entered in the fourth position indicates whether the item is to be repaired and identifies the lowest maintenance level with the capability to perform complete repair (i.e., all authorized maintenance functions). When a maintenance code is not used a dash (-) sign is entered. For multi-service equipment/systems or when a code is entered, this position will contain one of the following maintenance codes as assigned by the service(s) that require the code -

Code	Application/Explanation
O	The lowest maintenance level capable of complete repair of the support item is the organizational level.
F	The lowest maintenance level capable of complete repair of the support item is direct support.

Code	Application/Explanation
H	The lowest maintenance level capable of complete repair of the support item is general support.
D	The lowest maintenance level capable of complete repair of the support item is the depot level.
L	Repair restricted to designated Specialized Repair Activity.
Z	Non-repairable. No repair is authorized.
B	No repair is authorized. The item may be reconditioned by adjusting, lubricating, etc., at the user level, No parts or special tools are procured for the maintenance of this item.

(3) Recoverability code. Recoverability codes are assigned to support items to indicate the disposition action on unserviceable items. The recoverability code is entered in the fifth position of the uniform SMR code Format as follows-

Code	Explanation
Z	Nonrepairable item. When unserviceable, condemn and dispose at the level indicated in the first digit of the maintenance code.
O	Repairable item. When uneconomically repairable, condemn and dispose at organizational level.
F	Repairable item. When uneconomically repairable, condemn and dispose at the direct support level.
H	Repairable item. When uneconomically repairable, condemn and dispose at the general support level.
D	Repairable item. When beyond lower level repair capability, return to depot. Condemnation and disposal not authorized below depot level.
L	Repairable item. Repair, condemnation, and disposal not authorized below depot/Specialized Repair Activity level.
A	Item requires special handling or condemnation procedures because of specific reasons (i.e., precious metal content, high dollar value, critical material or hazardous material).

b. Federal Stock Number. Indicates the Federal stock number assigned to the item.

NOTE

For requisitioning purposes, the Federal stock number must be converted to the National stock number by adding "-00"

after the Federal stock classification (FSC) code (first four digits). For example, FSN 6625-553-0142 converts to NSN 6625-00-553-0142.

c. Description. Indicates the Federal item name and a minimum description required to identify the item. The last line indicates the reference number followed by the applicable Federal Supply Code for Manufacturer (FSCM) in parentheses. The FSCM is used as an element in item identification to designate manufacturer or distributor or Government agency, etc., and is identified in SB 708-42.

d. Unit of Measure (UM). Indicates the standard or basic quantity by which the listed item is used in performing the actual maintenance function. This measure is expressed by a two-character alphabetical abbreviation; e.g., ea, in, pr, etc., and is the basis used to indicate quantities and allowances in subsequent columns. When the unit of measure differs from the unit of issue, the lowest unit of issue that will satisfy the required units of measure will be requisitioned.

e. Quantity Incorporated in Unit. This column indicates the quantity of the item used in the equipment. Subsequent appearances of the same item in the same assembly are indicated by the letters "REF".

f. 15-Day Organizational Maintenance Allowance.

(1) The repair parts indicated by an asterisk in the allowance column represent those authorized for use at the organizational category, and will be requisitioned on an "as required" basis, until stockage is based on demand in accordance with AR 710-2.

(2) Major Army commanders are authorized to approve reduction in the range of support items authorized for use in units within their commands. Recommendations for increase in range of items authorized for use will be forwarded to Commander, US Army Electronics Command, ATTN: AMSEL-MA-CW, Fort Monmouth, N.J., 07708. Any changes approved will be reflected in a revision to the RPSTL.

(3) Allowance quantities are indicated in the special tools list section for special tools, TMDE, and other equipment.

g. Illustration. This column is divided as follows:

(1) *Figure number.* Indicates the figure number of the illustration on which the item is shown in TM 11-2142.

(2) *Item number.* Indicates the item number or reference designation used to reference the item in the illustration.

1-4. Special Information

a. Usable on codes are included in column 3

Uncoded items are applicable to all models. Identification of the usable on codes used in this publication are —

<i>Code</i>	<i>Used on</i>
ABA	AN/TOC-23
ABB	AN/TOC-3

b. The following publication pertains to the equipment and its components:

TM 11-5805-223-14 Operator's, Organizational, Direct Support and General Support Maintenance Manual: Telephone Terminal AN/TOC-3 and Telephone Terminal AN/TOC-23.

1-5. Location of Repair Parts

a. This manual contains one cross-reference index (sec V) to be used to locate a repair part when either the Federal stock number or reference number (manufacturer's part number) is known. The first column in the index is prepared in numerical or alphanumeric sequence in ascending order. The reference numbers (manufacturer's part numbers) are listed immediately following the last listed Federal stock number in the index of Federal stock numbers.

b. When the Federal stock number or reference number is known, follow the procedures given in (1) and (2) below.

(1) Refer to the index of Federal stock numbers (sec V) and locate the Federal stock number or reference number. The FSN and reference number are cross-referenced to the applicable figure and item number or reference designation.

(2) Refer to the repair parts list (sec III) and locate the figure number (col 7a) and item number or reference designation (col 7b) as noted in the FSN index.

c. When the figure and item number or reference designation are known, scrutinize columns 7a and 7b of the repair parts list (sec III) until the item is located.

d. When the FSN, reference number, figure number, item number and reference designation are not known, scrutinize column 3 of the repair parts list (sec III), which is arranged in alphabetical order.

1-6. Abbreviations

Not applicable

1-7 Reporting of Equipment Publication Improvements

The reporting of errors, omissions, and recommendations for improving this publication by the individual user is encouraged. Reports should be submitted on

DA Form 2028 (Recommended Changes to Publications and Blank Forms) and forwarded direct to Commander, US Army Electronics Command,

ATTN: AMSEL-MA-CW, Fort **Monmouth, N.J.**,
07703.

SECTION III

TM11-5805-223-20P

(1) SMR CODE	(2) FEDERAL STOCK NUMBER	(3) DESCRIPTION REFERENCE NUMBER & MFR CODE	(4) UNIT OF MEAS	(5) QTY IMC IN UNIT	(6) 15-DAY ORGANIZATIONAL MAINTENANCE ALLOW				(7) ILLUSTRATION	
					(a)	(b)	(c)	(d)	(e)	(f)
					1-5	6-20	21-50	51-100	FIGURE NO.	(TEA NO.
PAQZZ	6240-155-8706	LAMP, INCANDESCENT 1741 6 TO 2V 0.15 AMP (AUTHORIZED ALLOWANCES BASED ON A TOTAL OF 4) - 1 7A-2 (81349) ABA	EA	REF	•	•	•	•		1741
PAQZZ	6240-155-8706	LAMP, INCANDESCENT 1742 6 TO 8V 0.15 AMP (AUTHORIZED ALLOWANCES BASED ON A TOTAL OF 4) MS15571-2 (81349) ABA	EA	REF	•	•	•	•		1742
PAJZZ	6210-299-3870	LENS, INDICATOR LIGHT NO-REF-DESIG AMBER 93-113 (72619) ABA	EA	1	•	•	•	•		
PAUZZ	6210-299-3928	LENS, INDICATOR LIGHT NO-REF-DESIG COLORLESS . 92-117 (72619) ABA	EA	1	•	•	•	•		
PAQZZ	6210-643-2059	LENS, INDICATOR LIGHT NO-REF-DESIG RED 92-111 (72619) ABA	EA	1	•	•	•	•		
PAQZZ	6625-376-9798	PROD TEST NO-REF-DESIG 4-1/2 IN LG X 0.325 IN. DIA O/A ABA	EA	1	•	•	•	•		
XDOZZ		A333R (88197) ABA SCREW, EXTERNALLY RELIEVED BODY NO-REF-DESIG... FIL M 0.39 IN. DIA X 0.068 IN. M SLOTTED #10-32 X 1 1/32 IN. LG	EA	6	•	•	•	•		
PAQZZ	5960-686-8119	SHIELD, ELECTRON TUBE NO-REF-DESIG 1-3/8 IN LG X 0.958 IN. DIA O/A (AUTHORIZED ALLOWANCES BASED ON A TOTAL OF 10) TS102U01 (81349) ABA	EA	5	•	•	•	•		
XDOZZ		SHIELD, ELECTRON TUBE NO-REF-DESIG 1-1/2 IN... LG X 1.065 IN. DIA O/A (AUTHORIZED ALLOWANCES BASED ON A TOTAL OF 5) TS103U01 (81349) ABA	EA	2	•	•	•	•		
XDOZZ		SHIELD, ELECTRON TUBE NO-REF-DESIG 2-1/4 IN... LG X 0.958 IN. DIA O/A (AUTHORIZED ALLOWANCES BASED ON A TOTAL OF 6) TS102U03 (81349) ABA	EA	3	•	•	•	•		
XDOZZ		SHIELD, ELECTRON TUBE NO-REF-DESIG 2-1/4 IN LG X 55/64 IN DIA O/A (A/A BASED ON TOTAL OF 4) 16G13597P24 (71785) ABA	EA	1	•	•	•	•		
PAQZZ	5905-338-2898	RINGER, OSCILLATOR NO-REF-DESIG 6 X 4 1/2 X 4. - 9/16 IN O/A SCD62633 (80063) ABA	EA	1	•	•	•	•		12
PAQZZ	5960-188-6584	ELECTRON TUBE V1..... 6670 (81349) ABA	EA	2	•	•	•	•		V1
PAUZZ	5960-188-6584	ELECTRON TUBE V2..... 667J (81349) ABA	EA	REF	•	•	•	•		V2
XDOZZ		SHIELD, ELECTRON TUBE NO-REF-DESIG 1-1/2 IN... LG X 1.065 IN. DIA O/A (AUTHORIZED ALLOWANCES BASED ON A TOTAL OF 5) TS103U01 (81349) ABA	EA	2	•	•	•	•		13
PAQZZ	5805-503-1186	OSCILLATOR AUTOFREQUENCY NO-REF-DESIG 6-1 1/16 X 9-7/8 X 4-7/16 IN O/A 4000 TO 20 KC IN 4000 CYCLE STEPS SCD62634 (80063) ABA	EA	1	•	•	•	•		94
PAUZZ	5960-188-6584	ELECTRON TUBE V601..... 6670 (81349) ABA	EA	1	•	•	•	•		100 V601
PAQZZ	5960-262-1357	ELECTRON TUBE V602 (AUTHORIZED ALLOWANCES..... BASED ON A TOTAL OF 7) 6554-6AK5W (81349) ABA	EA	3	•	•	•	•		100 V602
PAQZZ	5960-262-1357	ELECTRON TUBE V603 (AUTHORIZED ALLOWANCES..... BASED ON A TOTAL OF 7) 6554-6AK5W (81349) ABA	EA	REF	•	•	•	•		100 V603
PAQZZ	5960-262-1357	ELECTRON TUBE V605 (AUTHORIZED ALLOWANCES..... BASED ON A TOTAL OF 7) 6554-6AK5W (81349) ABA	EA	REF	•	•	•	•		100 V605
XDOZZ		ELECTRON TUBE V604..... 662HA (81349) ABA	EA	1	•	•	•	•		130 V604
PAUZZ	5960-280-8119	SHIELD, ELECTRON TUBE NO-REF-DESIG 1-3/8 IN LG X 0.958 IN. DIA O/A (AUTHORIZED ALLOWANCES BASED ON A TOTAL OF 10) TS102U01 (81349) ABA	EA	3	•	•	•	•		
XDOZZ		SHIELD, ELECTRON TUBE NO-REF-DESIG 2-1/4 IN... LG X 0.958 IN. DIA O/A (AUTHORIZED ALLOWANCES BASED ON A TOTAL OF 6) TS102U03 (81349) ABA	EA	1	•	•	•	•		
XDOZZ		SHIELD, ELECTRON TUBE NO-REF-DESIG 1-1/2 IN... LG X 1.065 IN. DIA O/A (AUTHORIZED ALLOWANCES BASED ON A TOTAL OF 5) TS103U01 (81349) ABA	EA	1	•	•	•	•		
XDOZZ		JACKET, ELECTRON TUBE 601 1-3/16 IN. X 1-1/16 IN X 1-13/32 IN. LG O/A (AUTHORIZED ALLOW BASED ON A TOTAL OF 3) TS103U01 (81349) ABA	EA	1	•	•	•	•		100 601
PAUZZ	5960-262-1357	ELECTRON TUBE V91 (AUTHORIZED ALLOWANCES..... CONTINUED	EA	1	•	•	•	•		100 V91

(1) SIR CODE	(2) FEDERAL STOCK NUMBER	(3) DESCRIPTION REFERENCE NUMBER & MFR CODE	(4) UNIT OF MEAS	(5) QTY INC IN UNIT	(6) 10-DAY ORGANIZATIONAL MAINTENANCE ALLOW				(7) ILLUSTRATION	
					(a)	(b)	(c)	(d)	(a)	(b)
					1-5	6-20	21-50	51-100	FIGURE NO	VIEW NO
CONTINUED										
PAQZZ	5966-669-6461	BASED ON A TOTAL QTY) 3050-0435W (101349) ABA	EA	2						
PAQZZ	5950-316-9541	ELECTRON TUBE V52..... ABA 4000-0405W (101349) ABA SHIELD, COIL 500 2-1/8 IN. LG X 1-7/16 IN. DIA X 1 1/16 IN. Ø SCC0283Y (101349) ABA	EA	2					15	V52 500
ADXX		SHIELD, ELECTRON TUBE NO-REF-DESIG 2-1/4 IN. LG X 0.950 IN. DIA Ø/A (AUTHORIZED ALLOWANCES BASED ON A TOTAL QTY)	EA	2					15	
PAQZZ	5960-636-8119	TS102U03 (101349) ABA SHIELD, ELECTRON TUBE NO-REF-DESIG 1-3/8 IN. LG X 0.950 IN. DIA Ø/A (AUTHORIZED ALLOWANCES BASED ON A TOTAL QTY)	EA	2					15	
PAQZZ	5995-262-5996	TS102U01 (101349) ABA CABLE ASSEMBLY POWER ELECTRICAL NO-REF-DESIG 2 COND STRANDED #16AWG	EA	3					11	
ADXX		SCC02712 (100003) ABA CABLE, ASSEMBLY, SPECIAL PURPOSE, ELECTRICAL NO-REF-DESIG 2 COND, 1FT 3-7/8 IN LG Ø/A	EA	1					10	
PAQZZ	5945-553-1710	SCC02715 (100003) ABA CASE, POWER SUPPLY NO-REF-DESIG 20-5/8 IN LG X 17-5/16 IN W X 17-3/16 IN H Ø/A W/O COVER	EA	1					10	
PAQZZ	5920-140-0413	CONNECTOR, 100, ELECTRICAL NO-REF-DESIG 2 COND (1-5/8) IN LG X 1-17/32 IN DIA	EA	1						
PAQZZ	5900-390-5092	TS07 (100015) ABA COVER, CARRYING CASE NO-REF-DESIG 40-07/16 IN LG X 10 1/8 IN W X 2-1/2 IN THK Ø/A	EA	1						
PAQZZ	5900-430-7520	SCC02840 (100003) ABA STRAP, WOODRUM NO-REF-DESIG 20 1/2 IN LG X 1 IN W X 3/8 Ø/A	EA	2					10	
PAQZZ	5900-270-0404	SCC02800 (100003) ABA ELECTRON TUBE V501..... ABA	EA	0					110	V501
PAQZZ	5900-270-0405	4000 (101349) ABA ELECTRON TUBE V502..... ABA	EA	REF					110	V502
PAQZZ	5900-270-0406	4000 (101349) ABA ELECTRON TUBE V503..... ABA	EA	REF					110	V503
PAQZZ	5900-190-0400	4000 (101349) ABA FUSE, CARTRIDGE 1000 1/2 AMP 250V..... ABA	EA	1					110	F000
PAQZZ	5900-190-0401	4000 (101349) ABA FUSE, CARTRIDGE 1000 1 AMP 250V..... ABA	EA	1					110	F001
PAQZZ	5900-190-0402	4000 (101349) ABA LAMP, INCANDESCENT 1000 6 TD 5V 0.15 AMP..... ABA	EA	1					111	L001
PAQZZ	5900-290-0400	4000 (101349) ABA LAMP, INCANDESCENT 1000 6 TD 5V 0.15 AMP..... ABA	EA	1					111	L001
PAQZZ	5900-290-0401	4000 (101349) ABA LAMP, INCANDESCENT 1000 6 TD 5V 0.15 AMP..... ABA	EA	1					111	L001
PAQZZ	5900-290-0402	4000 (101349) ABA LAMP, INCANDESCENT 1000 6 TD 5V 0.15 AMP..... ABA	EA	1					111	L001
PAQZZ	5900-290-0403	4000 (101349) ABA LAMP, INCANDESCENT 1000 6 TD 5V 0.15 AMP..... ABA	EA	1					111	L001
PAQZZ	5900-290-0404	4000 (101349) ABA LAMP, INCANDESCENT 1000 6 TD 5V 0.15 AMP..... ABA	EA	1					111	L001
PAQZZ	5900-290-0405	4000 (101349) ABA LAMP, INCANDESCENT 1000 6 TD 5V 0.15 AMP..... ABA	EA	1					111	L001
PAQZZ	5900-290-0406	4000 (101349) ABA LAMP, INCANDESCENT 1000 6 TD 5V 0.15 AMP..... ABA	EA	1					111	L001
PAQZZ	5900-290-0407	4000 (101349) ABA LAMP, INCANDESCENT 1000 6 TD 5V 0.15 AMP..... ABA	EA	1					111	L001
PAQZZ	5900-290-0408	4000 (101349) ABA LAMP, INCANDESCENT 1000 6 TD 5V 0.15 AMP..... ABA	EA	1					111	L001
PAQZZ	5900-290-0409	4000 (101349) ABA LAMP, INCANDESCENT 1000 6 TD 5V 0.15 AMP..... ABA	EA	1					111	L001
PAQZZ	5900-290-0410	4000 (101349) ABA LAMP, INCANDESCENT 1000 6 TD 5V 0.15 AMP..... ABA	EA	1					111	L001
PAQZZ	5900-290-0411	4000 (101349) ABA LAMP, INCANDESCENT 1000 6 TD 5V 0.15 AMP..... ABA	EA	1					111	L001
PAQZZ	5900-290-0412	4000 (101349) ABA LAMP, INCANDESCENT 1000 6 TD 5V 0.15 AMP..... ABA	EA	1					111	L001
PAQZZ	5900-290-0413	4000 (101349) ABA LAMP, INCANDESCENT 1000 6 TD 5V 0.15 AMP..... ABA	EA	1					111	L001
PAQZZ	5900-290-0414	4000 (101349) ABA LAMP, INCANDESCENT 1000 6 TD 5V 0.15 AMP..... ABA	EA	1					111	L001
PAQZZ	5900-290-0415	4000 (101349) ABA LAMP, INCANDESCENT 1000 6 TD 5V 0.15 AMP..... ABA	EA	1					111	L001
PAQZZ	5900-290-0416	4000 (101349) ABA LAMP, INCANDESCENT 1000 6 TD 5V 0.15 AMP..... ABA	EA	1					111	L001
PAQZZ	5900-290-0417	4000 (101349) ABA LAMP, INCANDESCENT 1000 6 TD 5V 0.15 AMP..... ABA	EA	1					111	L001
PAQZZ	5900-290-0418	4000 (101349) ABA LAMP, INCANDESCENT 1000 6 TD 5V 0.15 AMP..... ABA	EA	1					111	L001
PAQZZ	5900-290-0419	4000 (101349) ABA LAMP, INCANDESCENT 1000 6 TD 5V 0.15 AMP..... ABA	EA	1					111	L001
PAQZZ	5900-290-0420	4000 (101349) ABA LAMP, INCANDESCENT 1000 6 TD 5V 0.15 AMP..... ABA	EA	1					111	L001

SECTION III

TM11-5805-223-20P

(1) SMR CODE	(2) FEDERAL STOCK NUMBER	(3) DESCRIPTION	(4) UNIT OF MEAS	(5) QTY INC IN UNIT	(6) 13-DAY ORGANIZATIONAL MAINTENANCE ALLOW				(7) ILLUSTRATION	
					(a) 1-5	(b) 6-20	(c) 21-50	(d) 51-100	(e) FIGURE NO.	(f) ITEM NO.
					REFERENCE NUMBER & MFR CODE	USABLE ON CODE				
PAQZZ	6240-155-8706	LAMP, INCANDESCENT 1741 6 TO 8V 0.15 AMP (AUTHORIZED ALLOWANCES BASED ON A TOTAL OF 4) MS15571-2 (81349) ABB	EA	REF						1741
PAQZZ	6240-155-8706	LAMP, INCANDESCENT 1742 6 TO 8V 0.15 AMP (AUTHORIZED ALLOWANCES BASED ON A TOTAL OF 4) MS15571-2 (81349) ABB	EA	REF						1742
PAQZZ	6210-299-3870	LENS, INDICATOR LIGHT NO-REF-DESIG AMBER 93-113 (172619) ABB	EA	1						
PAQZZ	6210-299-3928	LENS, INDICATOR LIGHT NO-REF-DESIG COLORLESS .. 92-117 (172619) ABB	EA	1						
PAQZZ	6210-643-2059	LENS, INDICATOR LIGHT NO-REF-DESIG RED 92-111 (172619) ABB	EA	1						
PAQZZ	6625-376-9798	PROD TEST NO-REF-DESIG 4-1/2 IN LG X 0.325 IN. DIA O/A A333R (88197) ABB	EA	1						
XDOZZ		SCREW, EXTERNALLY RELIEVED BODY NO-REF-DESIG... FIL M 0.39 IN. DIA X 0.068 IN. M SLOTTED #10-32 X 11/32 IN. LG SC862467 (80063) ABB	EA	6						
PAQZZ	5960-686-8119	SHIELD, ELECTRON TUBE NO-REF-DESIG 1-3/8 IN LG X 0.958 IN. DIA O/A (AUTHORIZED ALLOWANCES BASED ON A TOTAL OF 10) TS102U01 (81349) ABB	EA	5						
XDOZZ		SHIELD, ELECTRON TUBE NO-REF-DESIG 1-1/2 IN... LG X 1.065 IN. DIA O/A (AUTHORIZED ALLOWANCES BASED ON A TOTAL OF 9) TS103U01 (81349) ABB	EA	2						
XDOZZ		SHIELD, ELECTRON TUBE NO-REF-DESIG 2-1/4 IN... LG X 0.958 IN. DIA O/A (AUTHORIZED ALLOWANCES BASED ON A TOTAL OF 6) TS102U03 (81349) ABB	EA	3						
XDOZZ		SHIELD, ELECTRON TUBE NO-REF-DESIG 2-1/4 IN LG X 55/64 IN DIA O/A (A/A BASED ON TOTAL OF 4) A6G13597P24 (17185) ABB	EA	1						
PAQZZ	5905-356-2898	RINGER, OSCILLATOR NO-REF-DESIG 6 X 4 1/2 X 4. - 9/16 IN O/A SC062633 (80063) ABB	EA	1						12
PAQZZ	5960-188-6584	ELECTRON TUBE V1..... 6670 (81349) ABB	EA	2						94 V1
PAQZZ	5960-168-6584	ELECTRON TUBE V2..... 6670 (81349) ABB	EA	REF						V2
XDOZZ		SHIELD, ELECTRON TUBE NO-REF-DESIG 1-1/2 IN... LG X 1.065 IN. DIA O/A (AUTHORIZED ALLOWANCES BASED ON A TOTAL OF 5) TS103U01 (81349) ABB	EA	2						13
PAQZZ	5805-503-1186	OSCILLATOR AUDIOFREQUENCY NO-REF-DESIG 6-13/16 X 9-7/8 X 7-7/16 IN O/A 4000 TO 20 KC IN 4000 CYCLE STEPS SC062634 (80063) ABB	EA	1						14
PAQZZ	5960-168-6584	ELECTRON TUBE V601..... 6670 (81349) ABB	EA	1						100 V601
PAQZZ	5960-262-1357	ELECTRON TUBE V602 (AUTHORIZED ALLOWANCES... BASED ON A TOTAL OF 7) 6594-6AK5M (81349) ABB	EA	3						100 V602
PAQZZ	5960-262-1357	ELECTRON TUBE V603 (AUTHORIZED ALLOWANCES... BASED ON A TOTAL OF 7) 6594-6AK5M (81349) ABB	EA	REF						100 V603
PAQZZ	5960-262-1357	ELECTRON TUBE V605 (AUTHORIZED ALLOWANCES... BASED ON A TOTAL OF 7) 6594-6AK5M (81349) ABB	EA	REF						100 V605
XDOZZ		ELECTRON TUBE V606..... 6594-6AK5M (81349) ABB	EA	1						100 V606
PAQZZ	5960-686-8119	SHIELD, ELECTRON TUBE NO-REF-DESIG 1-3/8 IN LG X 0.958 IN. DIA O/A (AUTHORIZED ALLOWANCES BASED ON A TOTAL OF 10) TS102U01 (81349) ABB	EA	5						
XDOZZ		SHIELD, ELECTRON TUBE NO-REF-DESIG 2- 4 IN... LG X 0.958 IN. DIA O/A (AUTHORIZED ALLOWANCES BASED ON A TOTAL OF 6) TS102U03 (81349) ABB	EA	1						
XDOZZ		SHIELD, ELECTRON TUBE NO-REF-DESIG 1-1/2 IN... LG X 1.065 IN. DIA O/A (AUTHORIZED ALLOWANCES BASED ON A TOTAL OF 5) TS103U01 (81349) ABB	EA	1						
XDOZZ		SOCKET, ELECTRON TUBE 6AL5 1-1/2 IN. X 1-1/2 IN. IN X 1-1/2 IN. LG O/A (AUTHORIZED ALLOWANCES BASED ON A TOTAL OF 5) TS103P01 (81349) ABB	EA	1						100 V604
PAQZZ	5906-262-1357	ELECTRON TUBE V61 (AUTHORIZED ALLOWANCES... CONTINUED	EA	5						100 V61

SECTION III

TM11-5805-223-20P

(1) SHE CODE	(2) FEDERAL STOCK NUMBER	(3) DESCRIPTION REFERENCE NUMBER & APL CODE USABLE ON CODE		(4) UNIT OF MEAS	(5) QTY INC UNIT	(6) 15-DAY ORGANIZATIONAL MAINTENANCE ALW				(7) ILLUSTRATED	
						(a)	(b)	(c)	(d)	(a) PIECES 50	(b) PIECES 100
						1-5	6-20	21-50	51-100		
		CONTINUED									
PAGE 1	5960-669-6041	BASED ON A TOTAL OF 70 5054-0010 (01340) ADD									
		ELECTRON TUBE VSZ..... EA		2	*	*	*	*			VSS
PAGE 2	5950-376-9561	4005-0020 (01340) ADD									
		SHIELD, COIL 500 2-1/8 IN. LG & 1-7/16 IN. N. EA		2	*	*	*	*			15 ESD
		& 15/16 IN. D									
		SCC-2007 (01340) ADD									
		SHIELD, ELECTRON TUBE NO-REF-05516 2-1/8 IN. EA		2	*	*	*	*			15
		LG & 0.200 IN. DIA DIA AUTHORIZED ALLOWANCES									
		BASED ON A TOTAL OF 40									
		ELECTRON TUBE (01340) ADD									
PAGE 3	5960-686-8119	SHIELD, ELECTRON TUBE NO-REF-05516 2-3/8 IN LG EA		2	*	*	*	*			15
		& 0.200 IN. DIA DIA AUTHORIZED ALLOWANCES									
		BASED ON A TOTAL OF 100									
		ELECTRON TUBE (01340) ADD									

**INDEX - FEDERAL STOCK NUMBER AND REFERENCE NUMBER
CROSS-REFERENCE TO FIGURE AND ITEM NUMBER**

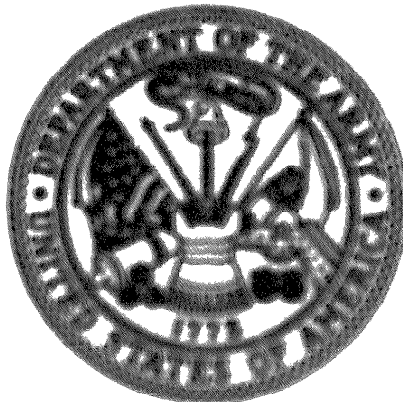
STOCK NUMBER	FIGURE NO.	ITEM NO.	STOCK NUMBER	FIGURE NO.	ITEM NO.	
5340-276-7585	10		5960-262-1357	96	V741	
5355-284-5176			5960-262-1357	100	V602	
5355-667-9003			5960-262-1357	100	V603	
5805-392-5692			5960-262-1357	100	V605	
5805-503-1186		94		5960-262-1357	102	V51
5805-553-1710		10		5960-272-9182	110	V551
5905-356-2898		12		5960-272-9182	110	V552
5920-199-9498		110	F592	5960-272-9182	110	V553
5920-284-9220		110	F591			
5920-356-2103		174	E737			
5920-356-2103	174	E763				
5920-356-2103	174	E764	5960-669-6861		V52	
5920-356-2103	174	X730	5960-686-8119	15		
			5975-224-5260	30		
5935-149-4013			5995-062-5996	11		
5935-201-8474	8		6145-283-9635	174		
5950-376-9541	10	E60	6210-299-3870			
5960-188-6584		V2	6210-299-3915	111		
5960-188-6584	94	V1	6210-299-3928			
5960-188-6584	100	V601	6210-643-2059			
			6240-155-8706		1741	
			6240-155-0706		1742	
			6240-155-8706		1801	
			6240-155-0706	111	1551	
5960-262-1357	96	V701	6625-376-9790			

REFERENCE NO.	MFR CODE	FIG. NO.	ITEM NO.	REFERENCE NO.	MFR CODE	FIG. NO.	ITEM NO.
A 1	01349			TS102U01	01349	15	
A333R	00197			TS102U03	01349		
C002HGF	01349	174		TS102U03	01349	15	
F02GR5008	01349	110	F592	TS103P01	01349	101	601
F02G1R008	01349	110	F591	TS103U01	01349		
MS15571-2	01349		1741	TS103U01	01349	15	
MS15571-2	01349		1742	16013597P24	71705		
MS15571-2	01349		1801	5654-6AK5W	01349	96	V701
MS15571-2	01349	111	1551	5654-6AK5W	01349	96	V741
MS90120-2001	01349			5654-6AK5W	01349	102	V51
082WA	01349	100	V604	6X4W	01349	110	V551
SCB62467	00063			6X4W	01349	110	V552
SCB62904	00063			6X4W	01349	110	V553
SCB63039	00063	174	E737	6005-6A65W	01349		V52
SCB63039	00063	174	E763	6554-6AX5W	01349	100	V602
SCB63039	00063	174	E764	6554-6AKW	01349	100	V603
SCB63039	00063	174	X730	6554-6AK5W	01349	100	V605
SCC62712	00063	11		6610	01349		V2
SCC62837	01349	15	E60	6610	01349	94	V1
SCC62844	00063	10		6610	01349	100	V604
SCC62846	00063			1057	00315		
SCC62849	00063	10		1187	00315		
SC0141580	00063	30		1238	00315	8	
SC062633	01349	12		92-111	72049		
SC062634	00063	94		92-112	72049		
SC067175	00063	16		92-117	72049	111	
TS102U01	01349			93-113	72049		

END

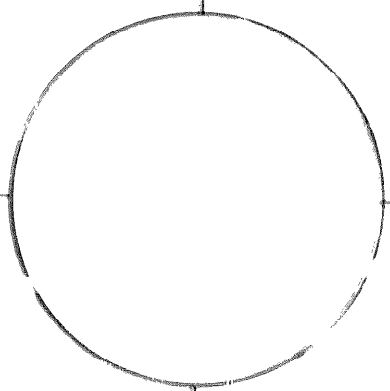
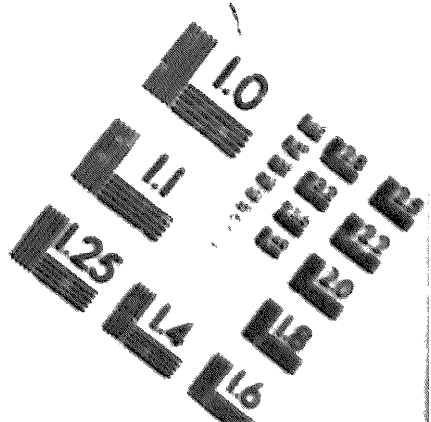
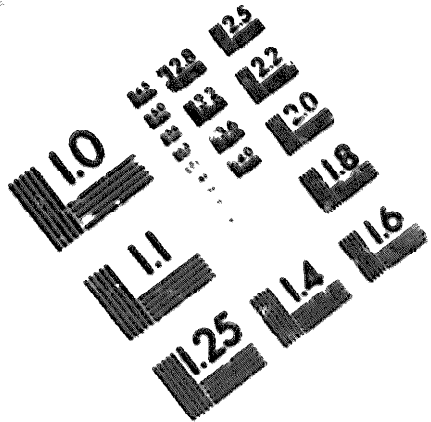
7-18-83

DATE





DEPARTMENT OF THE ARMY
MICROFORM TEST TARGET



150 MM

1.0 mm (ø = 81 μm)

ABCDEFGHIJKLMN OPQRSTUVWXYZ
abcdefghijklmnopqrstuvwxyz 01234567890

1.5 mm (ø = 100 μm)

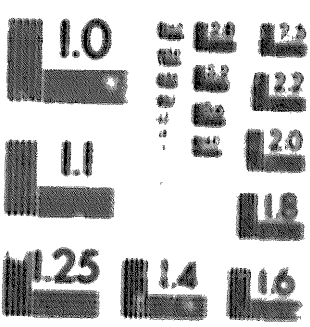
ABCDEFGHIJKLMN OPQRSTUVWXYZ
abcdefghijklmnopqrstuvwxyz 01234567890

2.0 mm (ø = 1.27 mm)

ABCDEFGHIJKLMN OPQRSTUVWXYZ
abcdefghijklmnopqrstuvwxyz
1234567890 & / % # ' * () - + = < > @

2.5 mm (ø = 1.77 mm)

ABCDEFGHIJKLMN OPQRSTUVWXYZ
abcdefghijklmnopqrstuvwxyz
1234567890 & / % # ' * () - + = < > @



1.0 mm (ø = 81 μm)

ABCDEFGHIJKLMN OPQRSTUVWXYZ
abcdefghijklmnopqrstuvwxyz 01234567890

1.5 mm (ø = 100 μm)

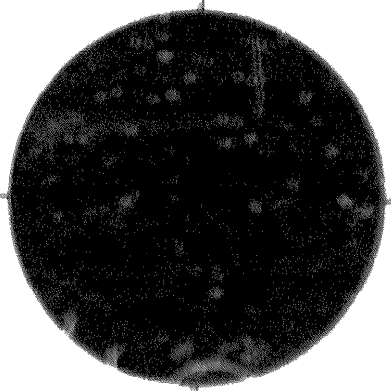
ABCDEFGHIJKLMN OPQRSTUVWXYZ
abcdefghijklmnopqrstuvwxyz 01234567890

2.0 mm (ø = 1.27 mm)

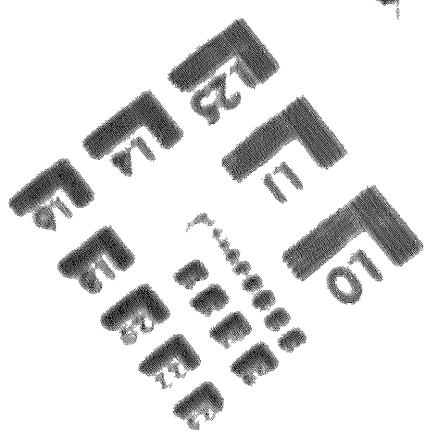
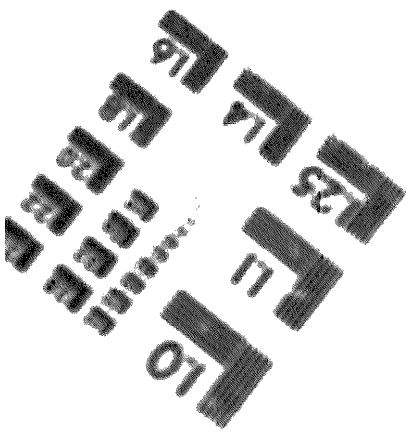
ABCDEFGHIJKLMN OPQRSTUVWXYZ
abcdefghijklmnopqrstuvwxyz
1234567890 & / % # ' * () - + = < > @

2.5 mm (ø = 1.77 mm)

ABCDEFGHIJKLMN OPQRSTUVWXYZ
abcdefghijklmnopqrstuvwxyz
1234567890 & / % # ' * () - + = < > @



200 MM



250 MM